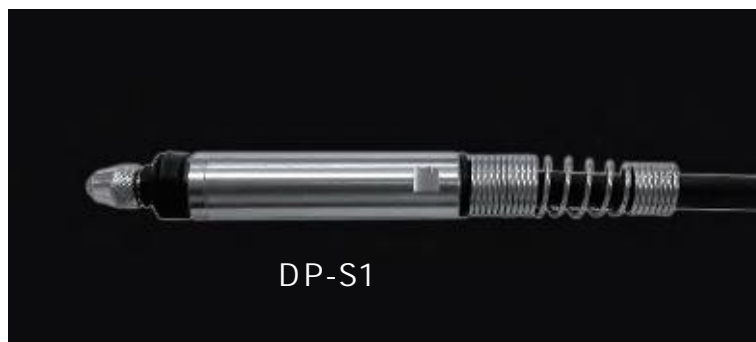


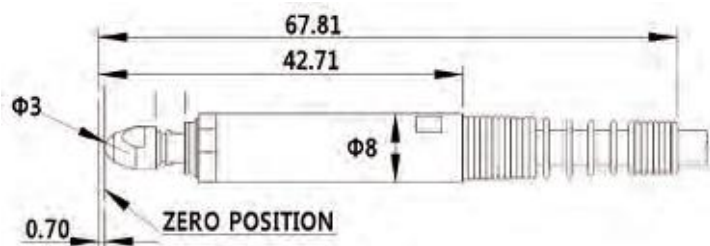
DP-S1(V)



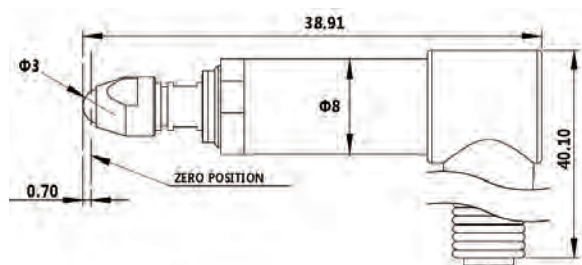
▶		
▶	8mm,	304
▶		
▶	1mm	
▶	IP64	
▶	0.1	

▶	
▶	
▶	
▶	
▶	

	DP-S1	DP-S1V
		±0.5mm
		0.1
		30g
		IP64
		Ø8
		steel
		0 to 40
		2m
		13-17g



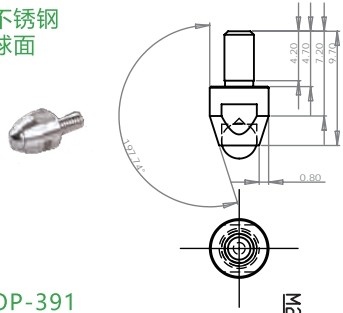
DP-S1



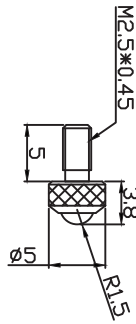
DP-S1V

触头

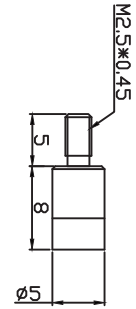
标配 OP-291
 材质：不锈钢
 触点：球面



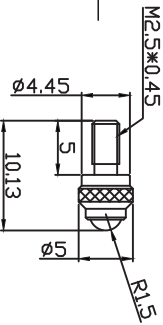
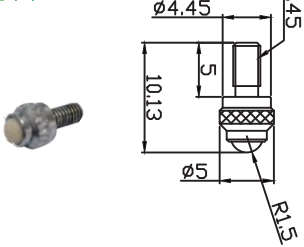
选配①OP-492
 材质：钨钢
 触点：球面



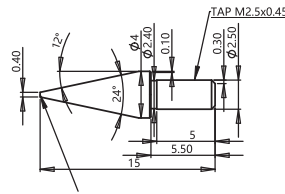
选配②OP-432
 材质：钨钢
 触点：平面



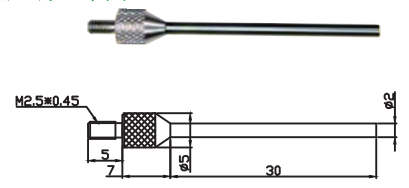
选配③OP-391
 材质：PEK
 触点：球面



选配④OP-211
 材质：不锈钢
 触点：一字面



选配⑤OP-441
 材质：钨钢
 触点：针型平面

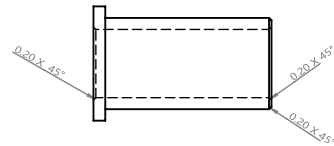
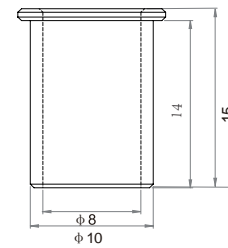
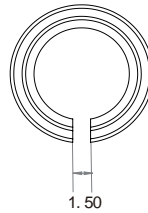
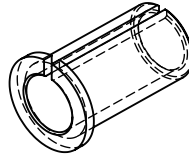


安装支架

本公司有标准的夹具配件供用户选择使用，用户也可以自行定制安装夹具，选配件需额外购买。夹具材质要求为非导磁材料，忌讳磁铁或铁等带磁或者导磁性材质。

标配C型套

型号：OP-610



选配螺纹套

型号：OP-080

